

Series XC600

Displays for work safety



- High attention due to brilliant LED digits
- Extensive product range
- Customizable

This is how you make safety visible

This is how you make safety visible



Accidents at work cause loss of production, consequential costs and a loss of image for the company. Preventive safety measures are a good approach, but the success depends mainly on the safety-conscious acting of every simple employee. Exactly this potential can be achieved with the visualization of the company's accident statistics.

Electronic display panels are an excellent medium for visualizing company accident statistics. Striking at the factory gate or placed directly in the factory they bear the topic of safety at work in mind every day and make the company's commitment to work safety obvious.

Striking accident statistics sharpens awareness

- Avoid accidents
- Reduce lost time injuries
- Increase productivity
- Save accident-related consequential costs
- Motivate employees, promote image



How does the display work?

The display counts the accident-free days and shows them with LED digits. An internal clock automatically increases this value by another day every 24 hours. If an accident at work happens, the display is reset and the counting function starts from the beginning. The restart makes people concerned and spontaneously appeals on their own responsibility for safety-conscious behavior on the job. This effect can be intensified by displaying other key figures from the company's accident statistics, such as number of accidents that happened already since the beginning of the year.

Brilliant LED digits draw the eye to the display

The key figures of the company accident statistics are displayed with brilliant luminous LED digits. In contrast to other technologies, LED digits with their high luminosity attract particular attention and draw the eye to the display. The displays for outdoor use are equipped with an automatic brightness control that adjusts the luminosity of the LEDs to the ambient light.

How to find the right display

Which series is suitable?

You can choose from several series of innovative displays, to effectively visualize the subject safety at work. Which series suits your application depends on the installation site, the available space and the environmental conditions on the installation site. The individual series can be characterized as follows:

- Series XC610 (page 6) covers compact displays with a high demand on design. Their frameless glass front, combined with stainless steel accents and innovative design predestine them for use in architecturally demanding environments.
- Series XC620, XC630, XC640, XC650 and XC680 (from page 8) are equipped with elegant aluminum profile housings and cover the range from compact displays up to large boards with representative character. With their exclusive design, they arouse the viewer's interest and effectively communicate your commitment to work safety.

Series XC640 and XC650 are offered as «Linea» in horizontal format or as «Quadro» in square format. The square format with its large surface is ideal for individual graphics with representative effect and distinctive advertising effect.
- Series XC670 (page 18) is equipped with robust steel sheet housings. This series is suitable for public areas or harsh environment where external influences on the display are to be expected

Which key figures of the accident statistics need to be presented?

If you only want to display the number of accident-free days, a display with one single line is enough. If you also want to display the number of accidents since the beginning of the year, select a display with two lines. If you also want to display the longest accident-free period, select a display with three lines. The lines are equipped each with four LED digits.

Which digit height is optimal?

Depending on the series, the LED digits have a height of 25, 55 or 100 mm. This allows reading distances of up to 10, 20 or 40 meters to be achieved. Another criterion is the strong signal effect that results from the large digits. Rather choose a larger character height, especially in the outdoor area.

Which fluorescent color for the LED digits?

You can choose between red or white lighting LEDs.
The fluorescent color has no influence on the function of the display.

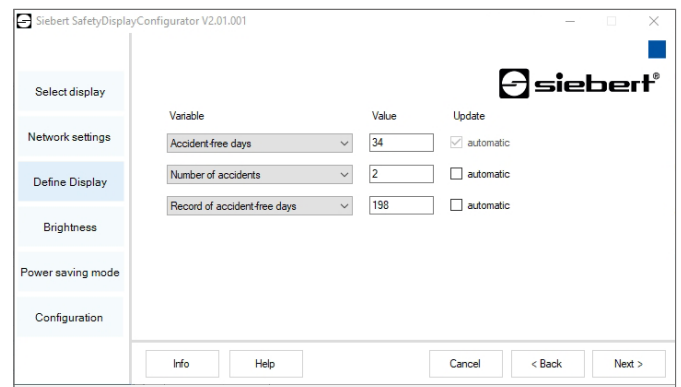
Is the display for indoor or outdoor use?

In the outdoor area, the display is subject to climatic influences against which it must be protected.
The displays are optionally available as outdoor versions with corresponding equipment features (except series XC610).

How to control the display?

The control takes place via a supplied PC software. During commissioning, it is used to set the number of accident-free days to the current value. Thereafter, this value automatically increases by another day every 24 hours. If an accident occurs, the displayed accident-free days can be set to zero from the PC.

The displays are equipped with a USB interface for connection to a PC. The connection can also be established via Bluetooth (except for the XC610 and XC620 Series). Optionally the displays are available with Ethernet TCP/IP interface so that they can be integrated into a network.



The displays with Ethernet TCP/IP interface can be integrated into WLAN architectures via access point or bridge. The necessary components are available on accessories.

Alternatively, to the control with a PC software the displays are optionally available for control with an infrared remote control.

What language has the lettering?

You can select the language of the lettering (accident-free days, accidents since the beginning of the year, longest accident-free period): English, French, German, Italian, Dutch or Spanish. Other languages are also possible.

How to configure the display

When you have chosen a series, specify the LED color, the control and the language of the lettering, as well as if the display is meant for indoor use or for outdoor use in the order key.

Series XC610



- Design classic in glass optics with stainless steel accents
- Compact dimensions 420 x 297 x 33 (41)¹ mm
- 1, 2 or 3 lines with 4 LED digits each, for key figures of the accident statistics
- Character height 25 mm
- For indoor use

¹ Displays with Ethernet interface



1 line



2 lines



3 lines

Order key

1 line

XC610 - S A - N - - S 1

2 lines

XC610 - S B - N - - S 1

3 lines

XC610 - S C - N - - S 1

LED color red (standard)	R
LED color white (option)	W

Control via USB interface (standard)	0	3
Control via Ethernet TCP/IP interface (option)	0	5
Control with remote control (option)	0	2

Lettering German	D	E
Lettering English	E	N
Lettering Spanish	E	S
Lettering French	F	R
Lettering Italian	I	T
Lettering Dutch	N	L

Example of order

XC610-SCW-N-03-S1EN

Series XC610, 3 lines, LED color white, USB control, lettering English

Series XC620



- Elegant aluminum housings
- Compact dimensions 400 x 280 x 62 mm
- 1, 2 or 3 lines with 4 LED digits each, for key figures of the accident statistics
- Character height 25 mm
- For indoor use, optional for outdoor use



1 line



2 lines



3 lines

Order key

- 1 Zeile
- 2 Zeilen
- 3 Zeilen

XC620 –	S	A		–		–		–	S	1		
XC620 –	S	B		–		–		–	S	1		
XC620 –	S	C		–		–		–	S	1		

LED color red (standard)	R										
LED color white (option)	W										
For indoor use (standard)		N									
For outdoor use (option)		A									
Control USB (standard)					0	3					
Control Ethernet TCP/IP (option)					0	5					
Control with remote control (option)					0	2					
Lettering German									D	E	
Lettering English									E	N	
Lettering Spanish									E	S	
Lettering French									F	R	
Lettering Italian									I	T	
Lettering Dutch									N	L	

Example of order

XC620-SCR-N-03-S1EN
 Series XC620, 3 lines, LED color red, for indoor use, Control USB, lettering English

Series XC630



- Elegant aluminum housings
- Dimensions 600 x 400 x 62 mm
- 1 line with 4 LED digits
- Large character height 55 mm
- For indoor use, optional for outdoor use



1 line

Order key

XC630 – S A – – – S 1 – –

LED color red (standard)	R							
LED color white (option)	W							
For indoor use (standard)		N						
For outdoor use (option)		A						
Control USB and Bluetooth (standard)			0	4				
Control Ethernet TCP/IP (option)			0	5				
Control with remote control (option)			0	2				
Lettering German							D	E
Lettering English							E	N
Lettering Spanish							E	S
Lettering French							F	R
Lettering Italian							I	T
Lettering Dutch							N	L

Example of order

XC630-SAW-A-03-S1EN

Series XC630, LED color white, for outdoor use, control USB and Bluetooth, lettering English

Series XC640



- Elegant aluminum housings
- Representative dimensions in two formats:
Horizontal format 800 x 450 x 62 mm (series XC640 Linea)
Square format 800 x 800 x 62 mm (series XC640 Quadro)
- 2 or 3 lines with 4 LED digits each, for key figures of the accident statistics
- Character height 25 mm
- For indoor use, optional for outdoor use



Series XC640 Linea with 2 lines



Series XC640 Linea with 3 lines



Series XC640 Quadro with 2 lines



Series XC640 Quadro with 3 lines

Order key

- Series XC640 Linea with 2 lines
- Series XC640 Linea with 3 lines
- Series XC640 Quadro with 2 lines
- Series XC640 Quadro with 3 lines

XC640 –	L	B		–		–		–	S	1		
XC640 –	L	C		–		–		–	S	1		
XC640 –	Q	B		–		–		–	S	1		
XC640 –	Q	C		–		–		–	S	1		

LED color red (standard)	R											
LED color white (option)	W											
For indoor use (standard)									N			
For outdoor use (option)									A			
Control USB and Bluetooth (standard)								0	4			
Control Ethernet TCP/IP (option)								0	5			
Control with remote control (option)								0	2			
Lettering German											D	E
Lettering English											E	N
Lettering Spanish											E	S
Lettering French											F	R
Lettering Italian											I	T
Lettering Dutch											N	L

Example of order

XC640-LCR-A-05-S1EN

Series XC640 Linea, 3 lines, LED color white, for outdoor use, control Ethernet TCP/IP, lettering English

Series XC650



- Elegant aluminum housings
- Particularly representative dimensions in two formats:
Horizontal format 1000 x 560 x 62 mm (Series XC650 Linea)
Square format 1000 x 1000 x 62 mm (Series XC650 Quadro)
- 2 or 3 lines with 4 LED digits each, for key figures of the accident statistics
- Large character height 55 mm
- For indoor use, optional for outdoor use



Series XC650 Linea with 2 lines



Series XC650 Linea with 3 lines



Series XC650 Quadro with 2 lines



Series XC650 Quadro with 3 lines

Order key

Series XC650 Linea with 2 lines
 Series XC650 Linea with 3 lines
 Series XC650 Quadro with 2 lines
 Series XC650 Quadro with 3 lines

XC650 -	L	B	-	-	-	-	S	1	-	-
XC650 -	L	C	-	-	-	-	S	1	-	-
XC650 -	Q	B	-	-	-	-	S	1	-	-
XC650 -	Q	C	-	-	-	-	S	1	-	-

LED color red (standard)	R								
LED color white (option)	W								
For indoor use (standard)						N			
For outdoor use (option)						A			
Control USB and Bluetooth (standard)							0	4	
Control Ethernet TCP/IP (option)							0	5	
Control with remote control (option)							0	2	
Lettering German									D E
Lettering English									E N
Lettering Spanish									E S
Lettering French									F R
Lettering Italian									I T
Lettering Dutch									N L

Example of order

XC650-QCW-A-02-S1EN

Series XC650 Quadro, 3 lines, LED color white, for outdoor use, control with remote control, lettering English

Series XC680



- Elegant aluminum housings
- Particularly representative dimensions 1000 x 1000 x 62 mm
- 1, 2 or 3 lines with 4 LED digits each, for key figures of the accident statistics
- Extra large character height 100 mm
- For indoor use, optional for outdoor use



1 line



2 lines



3 lines

Order key

1 line

2 lines

3 lines

XC680 -	S	A	-	-	-	-	S	1	-	-
XC680 -	S	B	-	-	-	-	S	1	-	-
XC680 -	S	C	-	-	-	-	S	1	-	-

LED color red (standard)	R								
LED color white (option)	W								
For indoor use (standard)		N							
For outdoor use (option)		A							
Control USB and Bluetooth (standard)			0	4					
Control Ethernet TCP/IP (option)			0	5					
Control with remote control (option)			0	2					
Lettering German							D	E	
Lettering English							E	N	
Lettering Spanish							E	S	
Lettering French							F	R	
Lettering Italian							I	T	
Lettering Dutch							N	L	

Example of order

XC680-SCW-N-05-S1EN

Series XC680, 3 lines, LED color white, for indoor use, control Ethernet TCP/IP, lettering English

Series XC670



- Robust steel sheet housing
- Dimensions 1000 x 800 x 70 mm
- 2 or 3 lines with 4 LED digits each, for key figures of the accident statistics
- Large character height 55 mm
- For indoor use, optional for outdoor use



2 lines



3 lines

Order key

2 lines
3 lines

XC670 - S B - - - S 1
XC670 - S C - - - S 1

LED color red (standard)	R							
LED color white (option)	W							
For indoor use (standard)	N							
For outdoor use (option)	A							
Control USB and Bluetooth (standard)		0	4					
Control Ethernet TCP/IP (option)		0	5					
Control with remote control (option)		0	2					
Lettering German							D	E
Lettering English							E	N
Lettering Spanish							E	S
Lettering French							F	R
Lettering Italian							I	T
Lettering Dutch							N	L

Example of order

XC670-SCW-A-03-05-S1EN

Series XC670, 3 lines, LED color white, for outdoor use, control USB and Bluetooth, lettering English

On demand with individual graphics

The displays are equipped with the graphics shown on the previous pages. If you prefer an individual graphic, for example with your logo, a photo or a special lettering, this is also possible. The following pictures show examples. Tell us what you want for your graphics. Our design studio will be pleased to make suggestions.



Series XC680

Series XC650



Series XC630

Series XC610



Series XC620



The series at a glance

Series XC610

Width x Height x Depth	420 x 297 x 33 mm, displays with Ethernet interface depth 41 mm
Number of lines	1, 2 or 3
Number of digits per line	4
Height of LED digits	25 mm
LED color	Red, optional white
Area of application	Indoor
Housing	Glass/stainless steel, rear side laminated, base body sheet steel
Protection type	IP40
Weight	approx. 4 kg
Power consumption	max. 25 W

Series XC620 Series XC630 Series XC640 Series XC650 Series XC680

Width x Height x Depth	400 x 280 x 62 mm	600 x 400 x 62 mm	800 x 450 x 62 (Linea) 800 x 800 x 62 (Quadro)	1000 x 560 x 62 (Linea) 1000 x 1000 x 62 (Quadro)	1000 x 1000 x 62 mm
Number of lines	1, 2 oder 3	1	2 or 3	2 or 3	1, 2 or 3
Height of LED digits	25 mm	55 mm	25 mm	55 mm	100 mm
Number of digits per line	4 (applies to all series in this table)				
LED color	Red, optional white (applies to all series in this table)				
Area of application	Indoor, optional outdoor (applies to all series in this table)				
Housing	Aluminum/acrylic glass backside laminated (applies to all series in this table)				
Protection type	Versions for indoor IP40, versions for outdoor IP54 (applies to all series in this table)				
Weight (approx.)	3 kg	4 kg	7/11 kg (Linea/Quadro)	11/18 kg (Linea/Quadro)	18 kg
Power consumption	max. 25 W	max. 25 W	max. 25 W	max. 50 W	max. 75 W

Series XC670

Width x Height x Depth	1000 x 800 x 70 mm
Number of lines	2 or 3
Number of digits per line	4
Height of LED digits	55 mm
LED color	Red, optional white
Area of application	Indoor, optional outdoor
Housing	Steel sheet, laminated
Protection type	Versions for indoor IP44, versions for outdoor IP54
Weight	approx. 32 kg
Power consumption	max. 50 W

All series

Operating voltage	100...240 V AC, 50...60 Hz
Operating temperature	0...40 °C for indoor use, -20...50 °C for outdoor use
Storage temperature	-25...85 °C
Relative humidity	<90 %, non-condensing

XCboard® – the big solution

Do your ideas of a display for work safety go beyond standardized systems?
 Would you like to design the display individually or adapt it to the local conditions?
 Would you like to integrate the display into the corporate communication and corporate identity of your company?

Then XCboards® are the optimal solution – from compact systems up to large boards. Besides the key figures of the company accident statistics, you can effectively display individual information, company internal messages or welcome texts for visitors on a LED text display. All the more, this draws attention to the display and thus to your commitment to work safety.

Talk to us! We will be pleased to make suggestions.

BIENVENUE CHEZ MGSEF
 Maintenance, gestion de source d'énergie et de froid
 LA SECURITE FAIT PARTIE DE MON METIER ET JE M'Y ENGAGE
 Nombre de jours sans accident: **462**
 LA SECURITE PLUS QU'UNE PRIORITE, NOTRE ADN
 > YOUR INFO <

МИС Сталь
 Компания Группы ММЗ
 Безопасность прежде всего
 SAFETY FIRST
 Дни без аварий: **235**
 ЗАПИСАТЬ Дни без аварий: **462**
 > YOUR INFO <

Aluminium profielen
 Ongevallen dit jaar: **2**
 Veiligheid eerst
 Ongevalvrije dagen: **235**
 SAFETY FIRST
 Record ongevalvrije dagen: **462**
 > YOUR INFO <

ecopower
 > YOUR INFO <
235
 Unfallfreie Tage
 Accident Free Days
 Unser bestes Ergebnis
 Our best record
 > YOUR INFO <

Our goal
 Zero accidents
 SECURITY CLASS
 GO FOR ZERO

	Sticks	Cracker H	Cracker VP	Pellets VP	Raw Pellets	Palletising
Risc normal	Green	Green	Green	Green	Green	Green
Risc greater	Yellow	Yellow	Yellow	Yellow	Yellow	Yellow
Risc high	Red	Red	Red	Red	Red	Red

> YOUR INFO <

CARC 24HO

La sécurité, notre priorité !

Safety first!

Jours sans accident Days without an accident	2
Record de jours sans accident Record consecutive days without an accident	235
Accidents cette année Number of accidents this year	462

Respectons les consignes de sécurité !
Respect safety instructions!

Nous sommes responsables de notre sécurité et de celle des autres.
We are responsible for our own safety and the safety of others.

Benvenuti a **EGY ITALIA**

28.09.22 **20:30** **-12°C**

Giorni **202**
senza incidenti

RECORD **420**
Giorni senza incidenti

>SAFETY FIRST<

Marseille plant **CM group**

30.05.2022 **20:49**

Number of accidents
Nombre d'accidents **2**

Accident-free days
Jours sans accident **235**

Longest accident-free period
Durée maximale de jours sans accident **462**

> YOUR INFO < **> YOUR INFO <**

20:49

WELCOME

Let us together,
employees and partners,
respect our health and
safety requirements

Latest work accident
30.05.2022

Accident-free days
235

RECORD - accident-free days
462

YOUR INFO

CET

siebert-group.com

GERMANY

Siebert Industrieelektronik GmbH
Siebertstrasse
D-66571 Eppelborn
Phone +49 6806 980-0
Fax +49 6806 980-999
info.de@siebert-group.com

AUSTRIA

Siebert Österreich GmbH
Simmeringer Hauptstrasse 24
A-1110 Wien
Tel. +43 1 740 401 53
info.at@siebert-group.com

FRANCE

Siebert France Sarl
4 rue de l'Abbé Louis Verdet
F-57200 Sarreguemines
Phone +33 3 87 98 63 68
Fax +33 3 87 98 63 94
info.fr@siebert-group.com

ITALY

Siebert Italia Srl
Via Galileo Galilei 2/A
I-39100 Bolzano (BZ)
Phone +39 0471 053 753
Fax +39 0471 053 754
info.it@siebert-group.com

THE NETHERLANDS

Siebert Nederland B.V.
Jadedreef 26
NL-7828 BH Emmen
Phone +31 591 633 444
Fax +31 591 633 125
info.nl@siebert-group.com

SWITZERLAND

Siebert AG
Bützbergstrasse 2
CH-4912 Aarwangen
Phone +41 62 922 18 70
Fax +41 62 922 33 37
info.ch@siebert-group.com

INTERNATIONAL

Argentina, Australia, Czech Republic, China, Colombia, Denmark, Estonia, Finland, Great Britain, Hong Kong, Island, Israel, Korea, Malaysia, Mexico, Norway, Poland, Singapore, Spain, South Afrika, Turkey

Siebert®, XC-Board® and the Siebert Logo are registered trademarks of Siebert Industrieelektronik GmbH. All other product names mentioned herein may be trademarks or registered trademarks of their respective owners. All information and data included in this documentation is provided without guarantee and is subject to change at any time without prior notification. All illustrations shall be without obligation and cannot be considered binding. The products shown may contain optional equipment. Availability and technical specifications are subject to change without prior notice. All rights to this documentation are reserved. Our current terms and conditions of sale and delivery apply exclusively (see www.siebert-group.com).